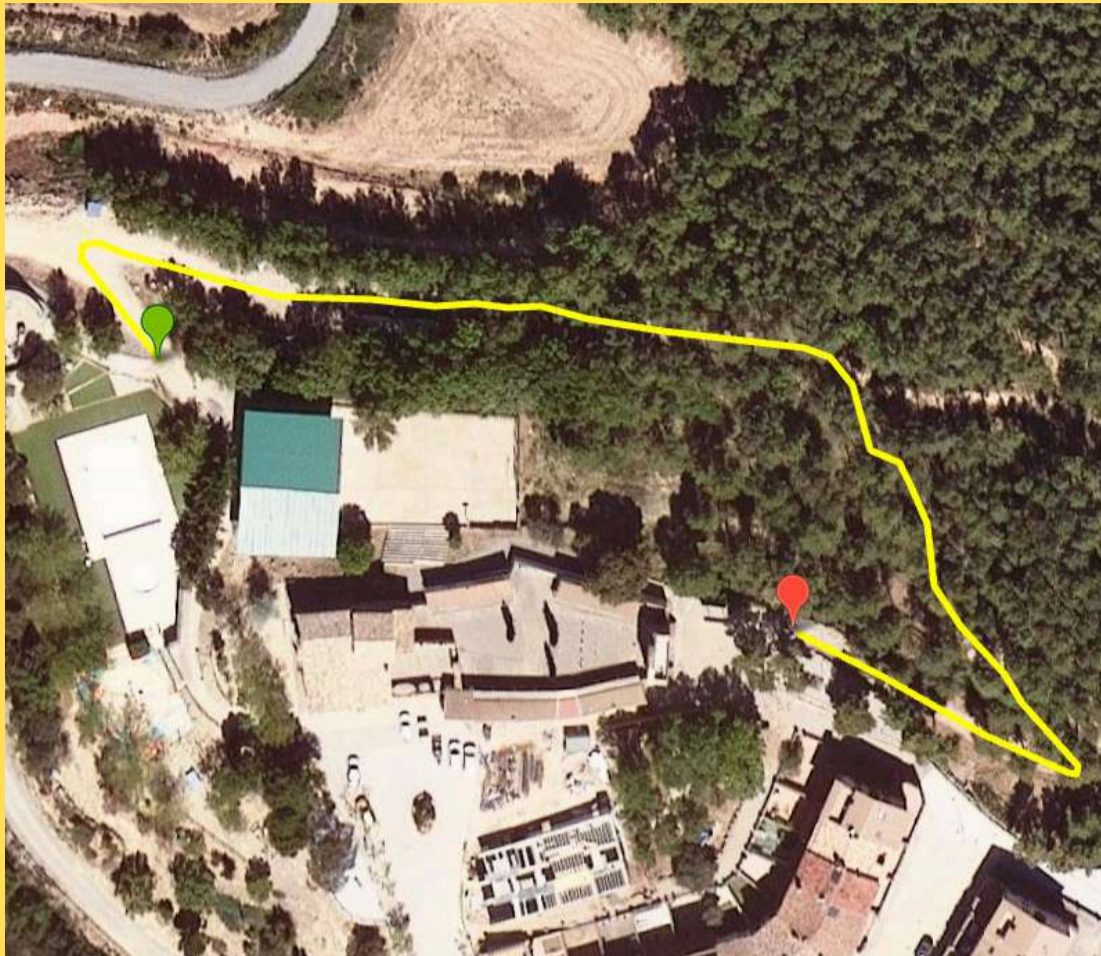
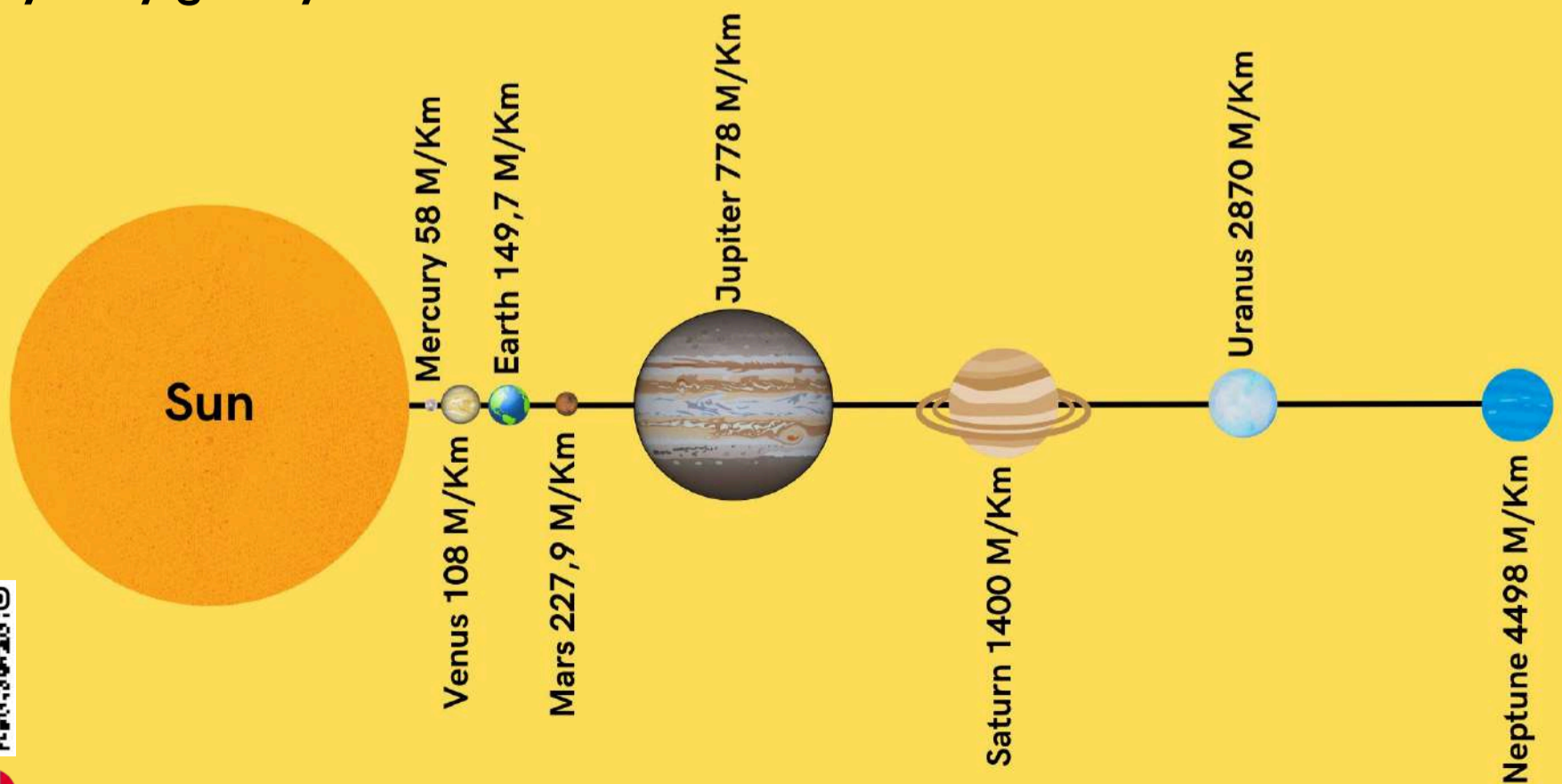


RF3 - Familiar Route of the Solar System



Route FAMILIAR	VERY EASY	WITHOUT TECHNICAL DIFFICULTY
Distance 0,27 km	Route CIRCULAR	Approx. time 30 minutes
Positive slope 14 m	Max altitude 649 m	Min altitude 630 m

During the Tiurana Solar System route you will find panels with information about the Sun and the planets that revolve around it: Mercury, Venus, Earth, Mars, Jupiter, Saturn, Uranus and Neptune. Starting from the information panel about the Sun, the first one you will find, you will find the planets at the distance they are from the Sun and in proportion to the total distance of this route. In this way, we want you to get an idea of how big our solar system is on this short trip and that every time you stop in front of a planet, you remember its distance from the Sun and from the other planets. We hope you enjoy this galactic trip through our solar system within the Milky Way galaxy.



Mercury

The closest planet to the Sun, the smallest... and the fastest!

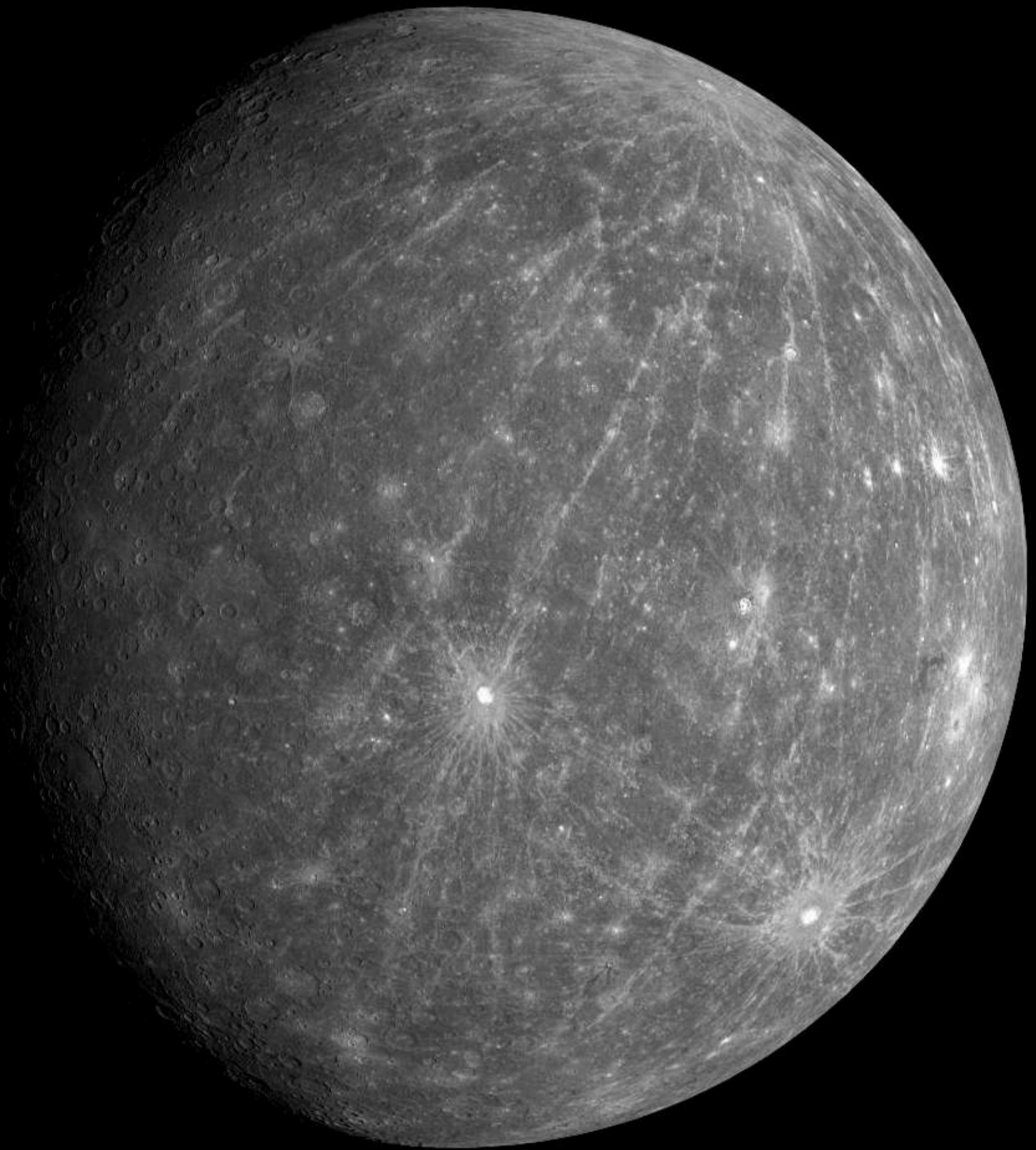


Image credits: NASA/Johns Hopkins University Applied Physics Laboratory/Carnegie Institution of Washington

Distance from the Sun (in millions of km): 58	Atmosphere composition: oxygen, sodium, hydrogen, helium, potassium
Distancia from the Sun (in astronomical units): 0,39	Atmosphere temperature: between 430°C and -180°C
Equatorial radius: 2.439 km	State: solid or rocky (inner planet)
Volume: 60.827.208.742 km ³	Moons: 0
Mass (kg): 3,30 x 10 ²³	Day length (rotation): 58,6 earth days
Mass of the planet in relation to the Earth: 0,05	Length of year (orbit): 88 earth days
Density: 5,427 g/cm ³	Velocity of its orbit around the Sun: 172.341 km/h
Surface gravity: 3,7 m/s ²	Escape velocity: 15.300 km/h

Information credits: Viquipèdia - NASA - IA

Venus

The planet with the longest day is also the hottest

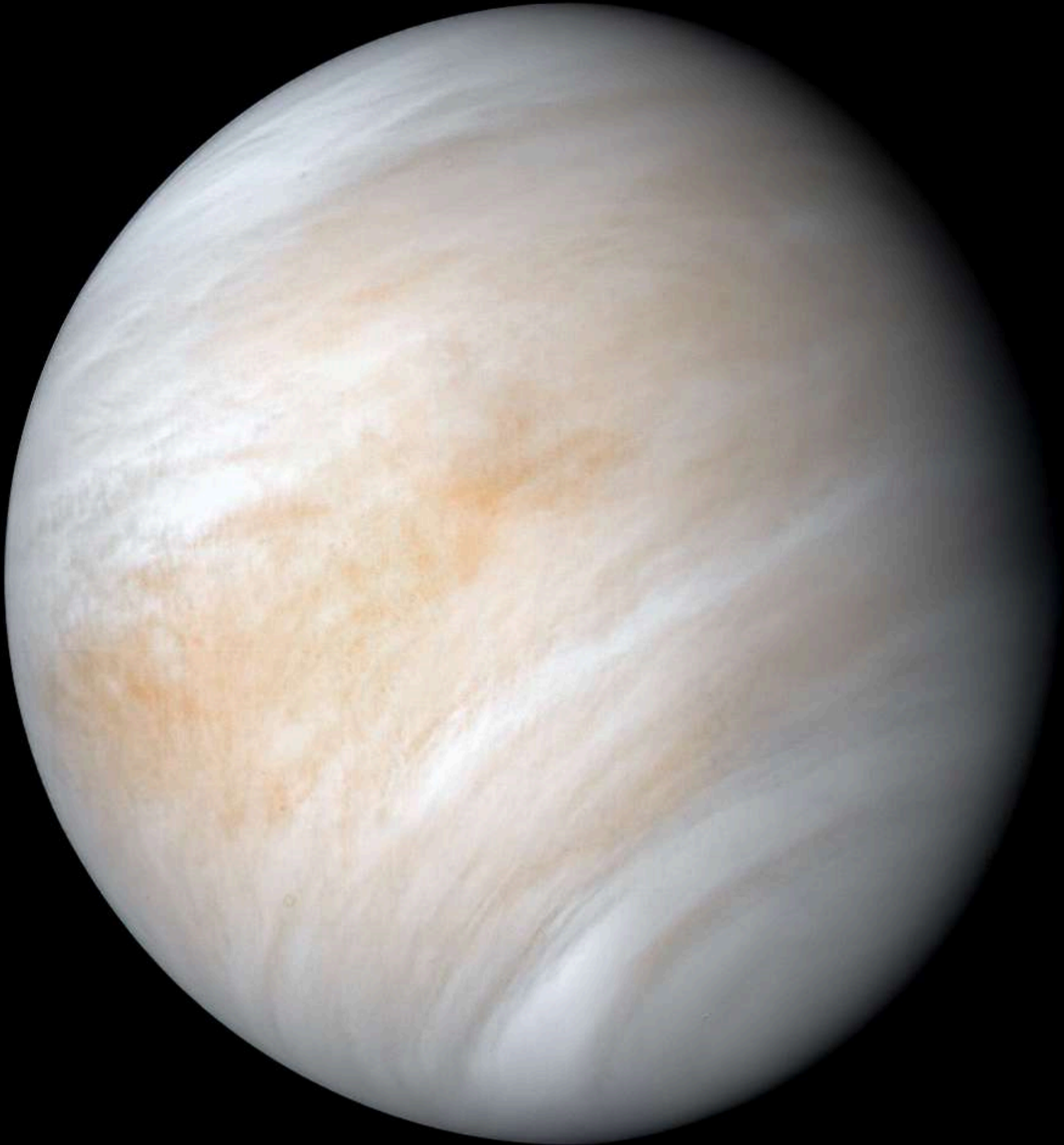


Image credits: NASA/JPL-Caltech

Distance from the Sun (in millions of km): 108,2	Atmosphere composition: carbon dioxide, nitrogen
Distance from the Sun (in astronomical units): 0,72	Atmosphere: between 475°C and 460°C
Equatorial radius: 6.051,8 km	State: solid or rocky (inner planeta)
Volume: 928.415.345.893 km ³	Moons: 0
Mass (kg): 4,87 x 10 ²⁴	Day length (rotation): 243 earth days
Mass of the planet in relation to the Earth: 0,815	Length of year (orbit): 224,7 earth days
Density: 5,243 g/cm ³	Velocity of its orbit around the Sun: 126.074 km/h
Surface gravity: 8,87 m/s ²	Escape velocity: 37.296 km/h

Information credits: Viquipèdia - NASA - IA

Earth

Our planet, the largest of the 4 rocky ones

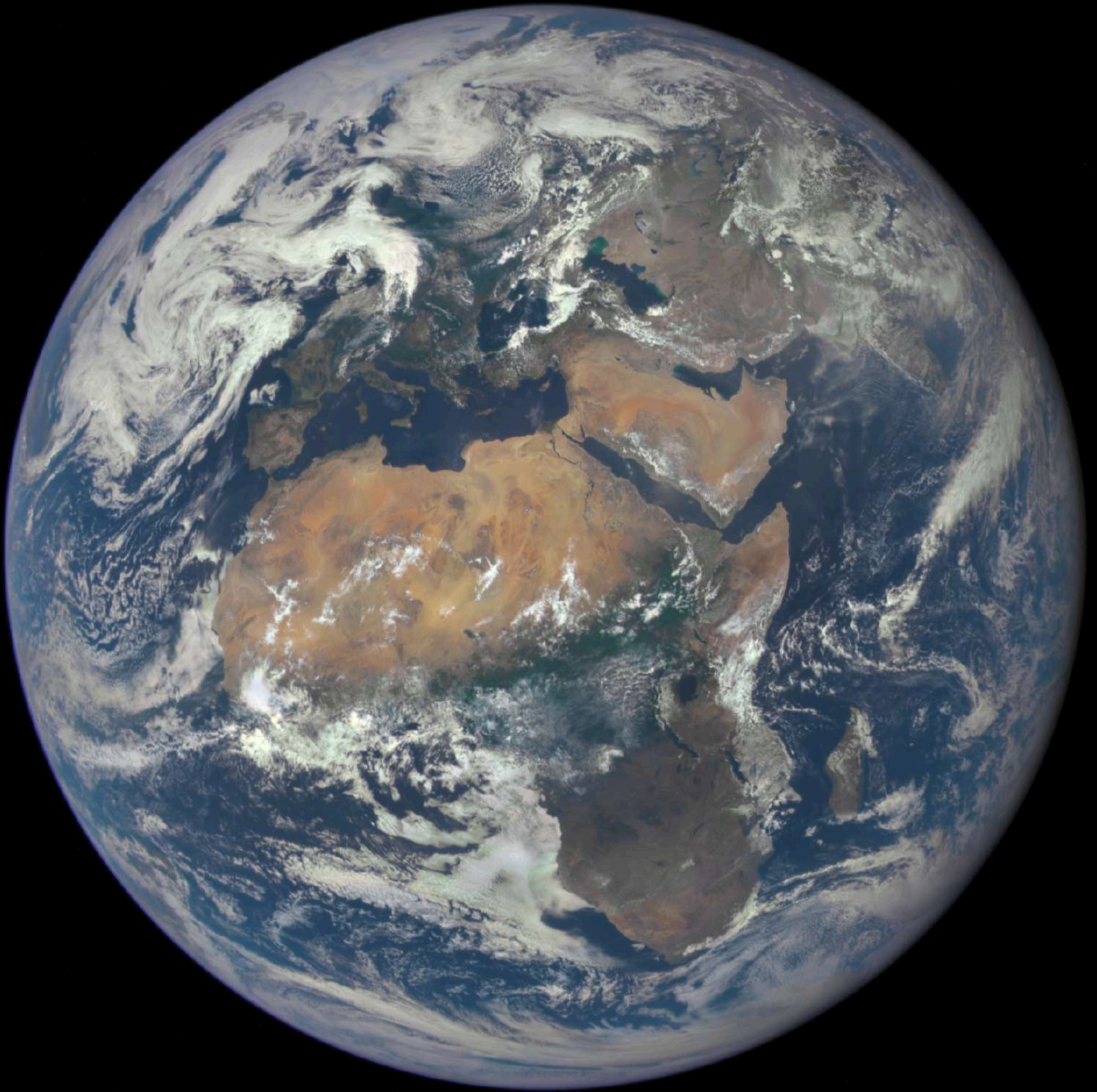


Image credits: NASA

Distance from the Sun (in millions of km): 149,6	Atmosphere composition: oxygen, nitrogen
Distance from the Sun (in astronomical units): 1	Atmosphere temperature: from 58°C to -88°C (average 15°C)
Equatorial radius: 6.378,1 km	State: solid or rocky (inner planet)
Volume: 1.083.206.916.846 km ³	Moons: 1
Mass (kg): 5,97 x 10 ²⁴	Day length (rotation): 23 hours and 56 minutes
Mass of the planet in relation to the Earth: 1	Length of year (orbit): 365 days, 6 hours and 9,76 minutes
Density: 5,513 g/cm ³	Velocity of its orbit around the Sun: 107.218 km/h
Surface gravity: 9,8 m/s ²	Escape velocity: 40.284 km/h

Information credits: Viquipèdia - NASA - IA

Mars

The red planet with the largest mountain and the largest volcano

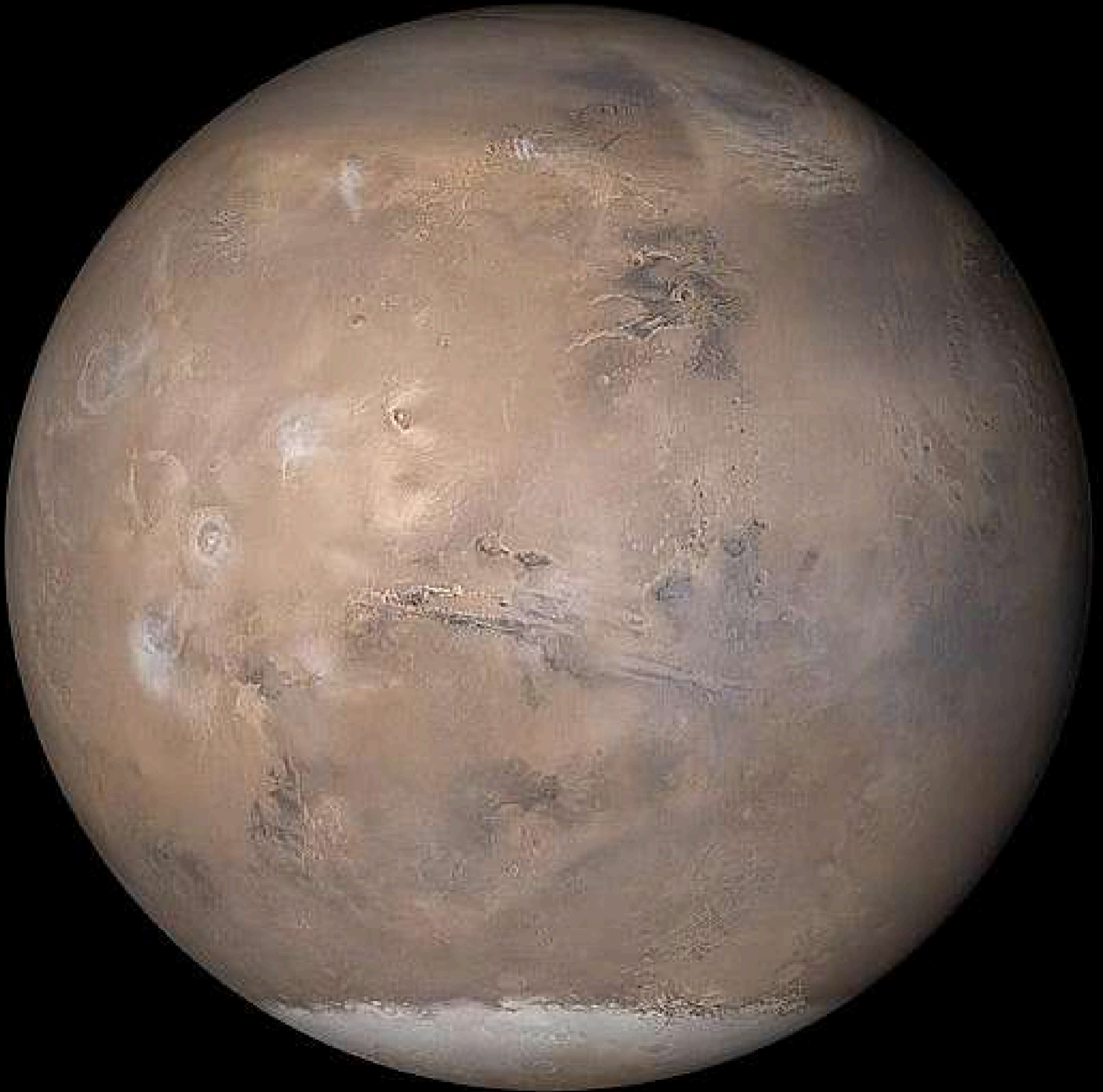


Image credits: NASA/JPL/Malin Space Science Systems

Distance from the Sun (in millions of km): 227,9	Atmosphere composition: carbon dioxide, nitrogen, argon
Distance from the Sun (in astronomical units): 1,52	Atmosphere temperature: between 20°C and -143°C
Equatorial radius: 3.389 km	State: solid or rocky (inner planet)
Volume: 163.115.609.799 km ³	Moons: 2 (Fobos, Deimos)
Mass (kg): 6,42 x 10 ²³	Day length (rotation): 24 hours and 37 minutes
Mass of the planet in relation to the Earth: 0,11	Length of year (orbit): 687 days
Density: 3,934 g/cm ³	Velocity of its orbit around the Sun: 86.871 km/h
Surface gravity: 3,71 m/s ²	Escape velocity: 18.108 km/h

Information credits: Viquipèdia - NASA - IA

Jupiter

The largest planet in the solar system and the shortest day

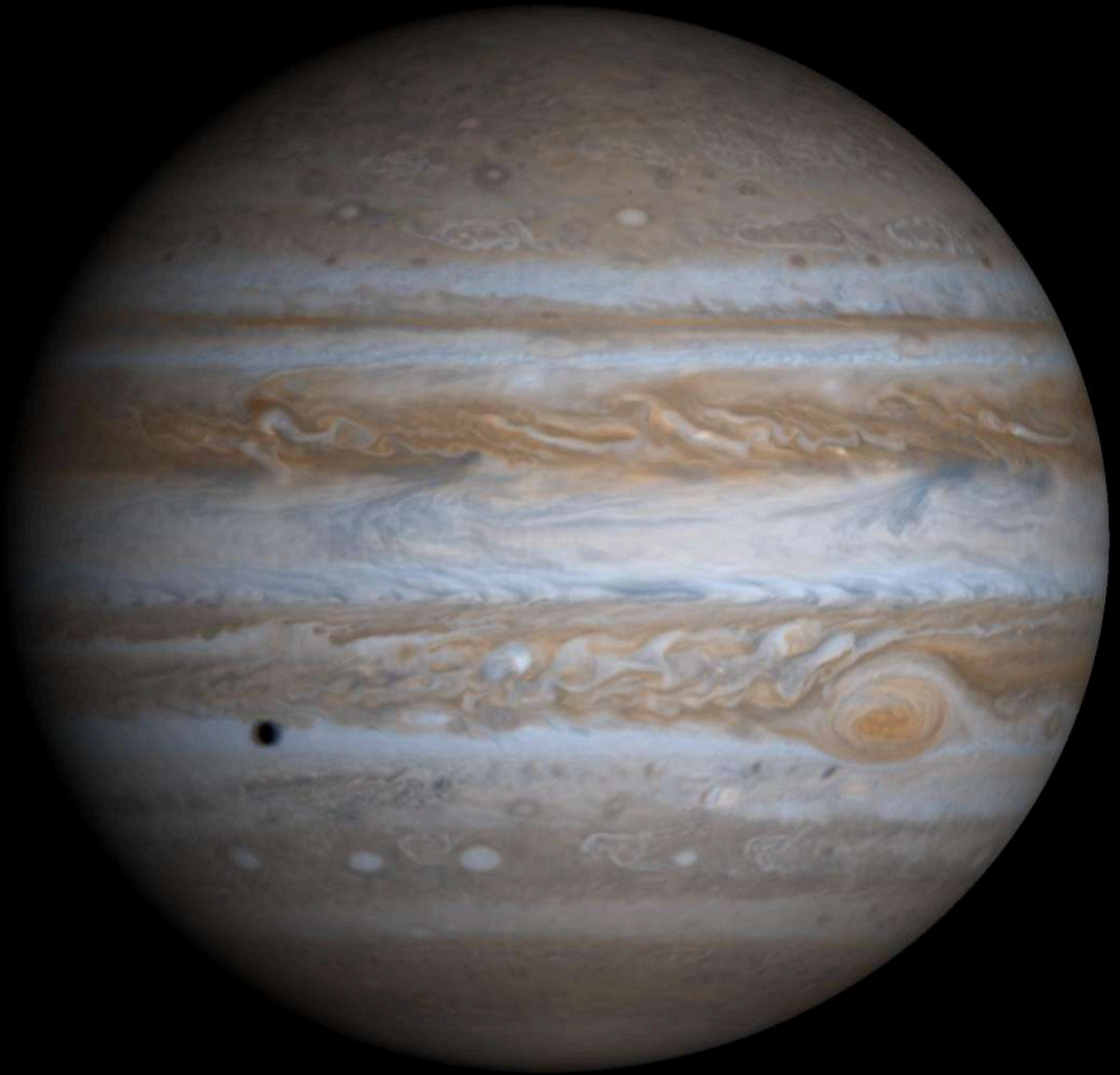


Image credits: NASA/JPL/University of Arizona

Distance from the Sun (in millions of km): 778,5	Atmosphere composition: hydrogen, helium
Distància from the Sun (in astronomical units): 5,20	Atmosphere temperature: between -108°C and -145°C
Equatorial radius: 71.492 km	State: gaseous (outer planet - gas giant)
Volume: 1.431.281.810.739.360 km ³	Moons: 79
Mass (kg): 1,90 x 10 ²⁷	Day length (rotation): 9 hours and 56 minutes
Mass of the planet in relation to the Earth: 318	Length of year (orbit): 12 years
Density: 1,326 g/cm ³	Velocity of its orbit around the Sun: 47.051 km/h
Surface gravity: 24,79 m/s ²	Escape velocity: 214.200 km/h

Information credits: Viquipèdia - NASA - IA

Saturn

The planet of the rings and the moons



Image credits: NASA and The Hubble Heritage Team (STScI/AURA) Acknowledgment: R.G. French (Wellesley College), J. Cuzzi (NASA/Ames), L. Dones (SwRI), and J. Lissauer (NASA/Ames)

Distance from the Sun (in millions of km): 1.400	Atmosphere composition: hydrogen, helium
Distància from the Sun (in astronomical units): 9,54	Atmosphere temperature: average -176°C
Equatorial radius: 58.232 km	State: gaseous (outer planet - gas giant)
Volume: 827.129.915.150.897 km ³	Moons: 83
Mass (kg): 5,68 x 10 ²⁶	Day length (rotation): 10 hours and 34 minutes
Mass of the planet in relation to the Earth: 95,2	Length of year (orbit): 29 years
Density: 0,687 g/cm ³	Velocity of its orbit around the Sun: 34.821 km/h
Surface gravity: 10,4 m/s ²	Escape velocity: 129.924 km/h

Information credits: Viquipèdia - NASA - IA

Uranus

The ice giant planet

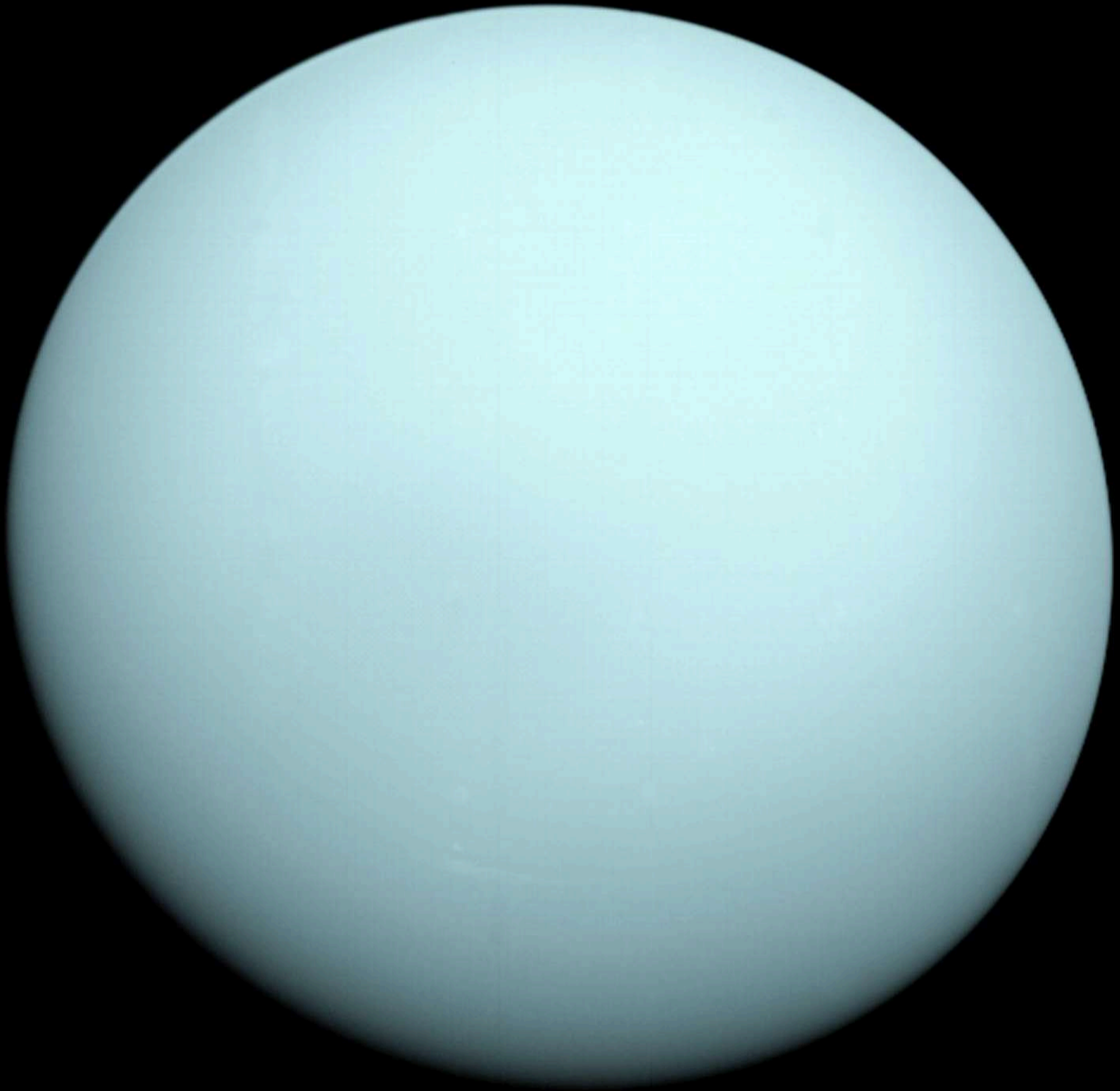


Image credits: NASA/JPL-Caltech)

Distance from the Sun (in millions of km): 2.870	Atmosphere composition: hydrogen, helium, methane
Distance from the Sun (in astronomical units): 19,18	Atmosphere temperature: minimum of -224°C
Equatorial radius: 25.362 km	State: gaseous (outer planet - ice giant)
Volume: 68.334.355.695.584 km ³	Moons: 27
Mass (kg): 8,68 x 10 ²⁵	Day length (rotation): 17 hours and 14 minutes
Mass of the planet in relation to the Earth: 14,5	Length of year (orbit): 84 years
Density: 1,270 g/cm ³	Velocity of its orbit around the Sun: 24.477 km/h
Surface gravity: 8,87 m/s ²	Escape velocity: 76.800 km/h

Information credits: Viquipèdia - NASA - IA

Neptune

The blue planet, the only one not visible to the naked eye

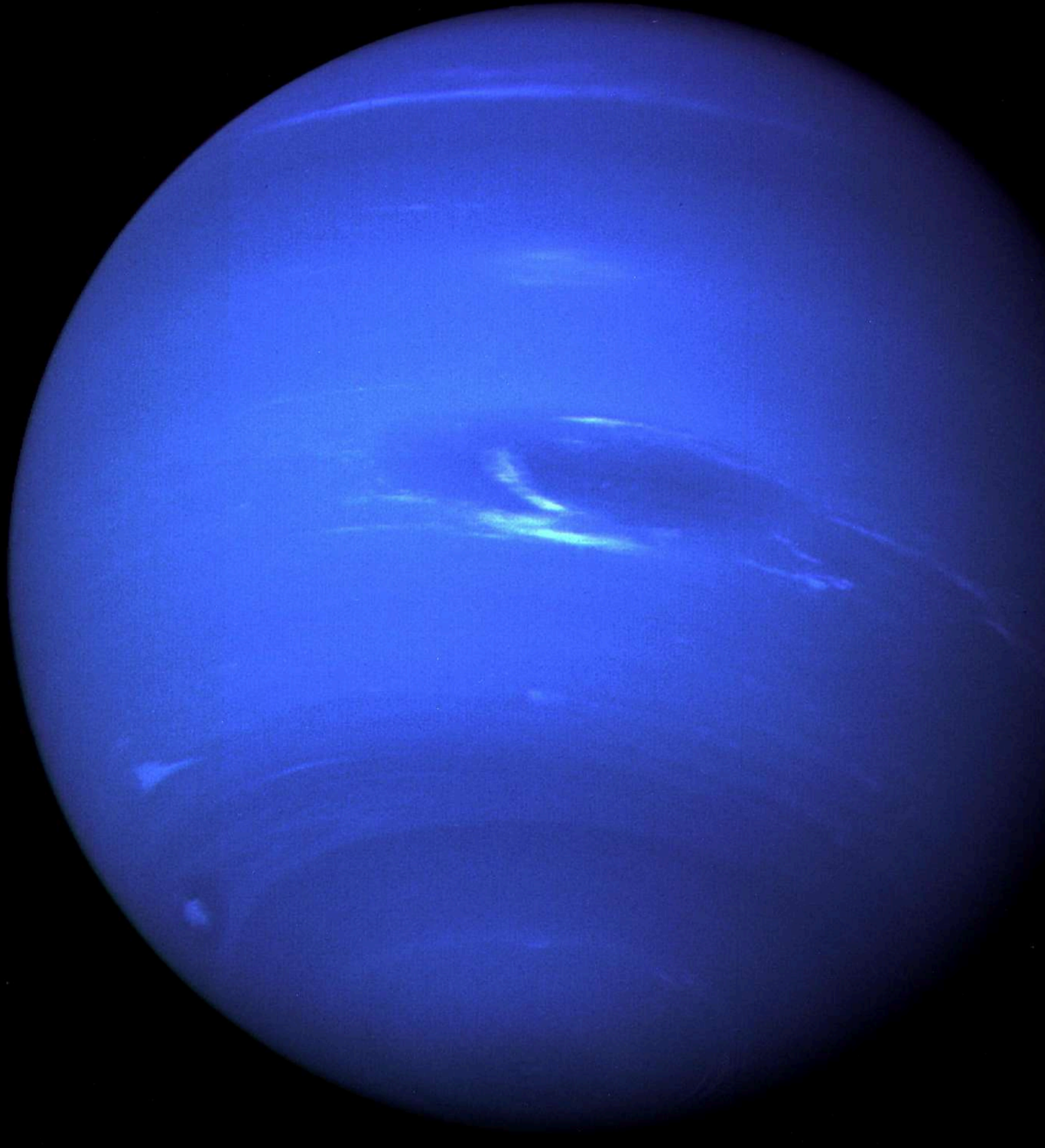


Image credits: NASA/JPL

Distance from the Sun (in millions of km): 4.498	Atmosphere composition: hydrogen, helium, methane
Distance from the Sun (in astronomical units): 30,06	Atmosphere temperature: between -201°C and -221°C
Equatorial radius: 24.764 km	State: gaseous (outer planet - ice giant)
Volume: 62.525.703.987.412 km ³	Moons: 14
Mass (kg): 1,02 x 10 ²⁶	Day length (rotation): 16 hours and 6 minutes
Mass of the planet in relation to the Earth: 17	Length of year (orbit): 165 years
Density: 1,638 g/cm ³	Velocity of its orbit around the Sun: 19.720 km/h
Surface gravity: 11,15 m/s ²	Escape velocity: 84.816 km/h

Information credits: Viquipèdia - NASA - IA

Milky Way Galaxy

The Sun and 8 planets have been found along the path of the Solar System, but there are also other objects, such as 5 dwarf planets: Ceres is located in the asteroid belt (between Mars and Jupiter) and Pluto, Haumea, Makemake and Eris (known as plutoids) are located in the Kuiper belt (beyond the orbit

Our solar system is located within the Milky Way galaxy, which is a barred spiral galaxy. The structure of the Milky Way consists of two main spiral arms (Scute-Centaurus and Perseus) and two secondary arms (Norma and Sagittarius). Our solar system is located in the Oriol or Local Spur, which in turn forms part of the Sagittarius spiral arm.

In the image, you can look for the English word "Sun" above the name of Orion's Spur to locate where we are within our galaxy.

At this point, you have just left the solar system, ending your unique galactic journey. We hope you enjoyed this interplanetary trip!

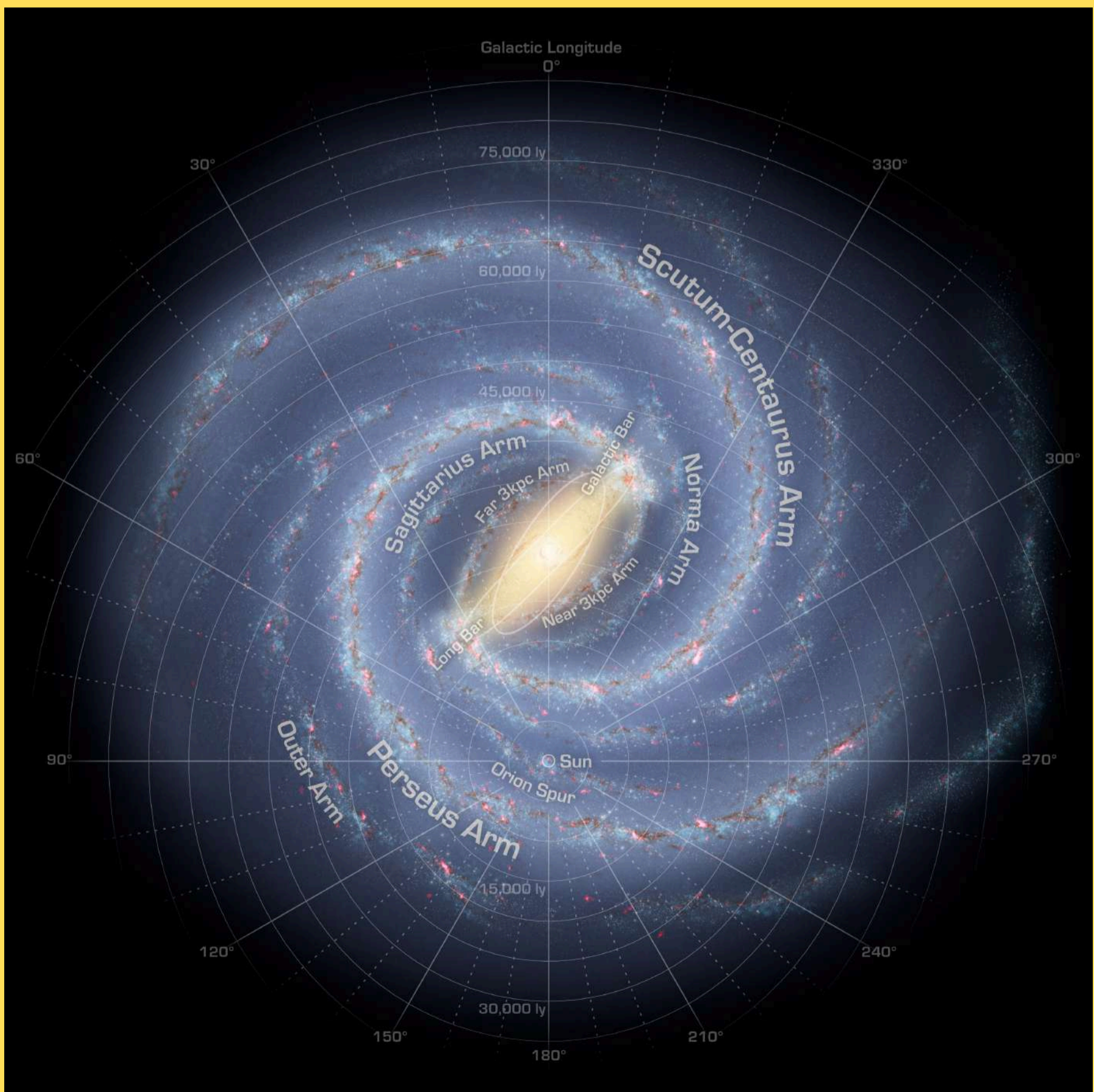


Image credits: NASA/JPL-Caltech

Information credits: Viquipèdia - NASA - IA

